

6000



# FIRECHIEF® ALARMS

UNOBTRUSIVE BY DESIGN

## Firechief RF 10 Year Battery Optical Smoke Alarm Recessed Mounting Kit

FC6000SMK78 - Part of the Firechief Alarms 6000 Range



100% TESTED



POWERED BY  
**CAVIUS**  
TECHNOLOGY

**DANISH  
DESIGN**



reddot design award  
winner



**FIRECHIEF®**  
making the world a safer place

**W** [firechiefglobal.com](https://www.firechiefglobal.com)



## PRODUCT DATA

Firechief CAVIUS Build-in base is designed for installation in private homes with Firechief CAVIUS alarms.

This Firechief CAVIUS build-in base fits all Firechief CAVIUS 78mm alarms.

The Build-in base is mounted in a drilled hole in the ceiling and is the first "build in" base, to pass the Fireroom Test.

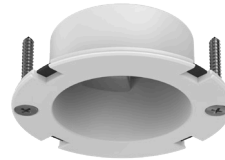
The operation is convenient and easy, and the build-in base can be installed in 3 different ways!

1. Drill a Ø78mm hole in the ceiling
2. Insert the base with our standard Firechief CAVIUS clamps with snap feature, 2 screws (included) or double-sided tape
3. The cover is snapped into the Build-in base

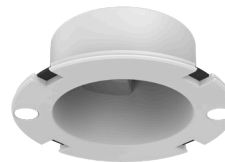
The standard Firechief CAVIUS snap features, will substitute original mounting base and allow you to hide much of your alarm into the ceiling.



CLAMPS



SCREWS



DOUBLE-SIDED TAPE



100% scale - Diameter 78mm

## CONTACT US ON

T 0330 999 0019

F 01572 770133

E [sales@firechiefglobal.com](mailto:sales@firechiefglobal.com)

Monday to Friday 8am – 5pm